



First Coast Expressway

*Sara Pleasants,
FDOT Community
Outreach Specialist*

Under Construction: SR 21 to North of SR 16



- Contractor: SACYR Construction
- Construction start date: 2019
- Anticipated completion: Early 2025
- Cost: \$229 million
- 11 miles of new multi-lane, limited access toll roadway
- Drainage system with multiple storm water ponds
- New lighting, signs and guardrails
- Three all-electronic tolling facilities
- 26 bridges, including two new bridges over Black Creek

Under Construction: SR 21 to North of SR 16



- The signature feature of the project is the 6-span, 920-foot complex category 2 bridge over the navigational channel of Black Creek. The twin bridges have waterline footings, piles driven in complicated soils, tension piles and FIB girders.

Under Construction: SR 21 to North of SR 16



- Beams have been installed for 3 spans with assistance from a specialty barge and counterweights designed to hold 3 cranes and 2 beams, to facilitate a tandem pick beam placement operation.

Under Construction: SR 21 to North of SR 16



Milestones expected for the year ahead:

- Completion of bridges over Black Creek
- Roadway from Sandridge Road to beginning of the project will be completed and paved with asphalt

Under Construction: SR 21 to North of SR 16



- All piles will be driven, with 22 of 26 bridges completed

Under Construction: North of SR 16 to East of CR 209



- Prime Contractor: Superior Construction
- Construction start date: 2019
- Anticipated completion: Early 2025
- Cost: \$180 million
- 9.7 miles of new multi-lane, limited access toll road
- Drainage system for the new roadway
- Traffic signals, lighting, signs and guardrails
- 18 new bridges
- Two new electronic toll facilities

Under Construction: North of SR 16 to East of CR 209



Milestones expected for the year ahead:

- Finalize bridge construction – remaining work includes pouring of one deck and traffic railing on a handful of bridges

Under Construction: North of SR 16 to East of CR 209



- Completion of all embankment
- Continue paving from CR 15A to east of CR 209

Under Construction: North of SR 16 to East of CR 209



- Continued construction of roadway pushing to the east

Next Segment: New St. Johns River Bridge



Next Segment: New St. Johns River Bridge



Existing Shands Bridge:

- Two lanes (one in each direction)
- Three-foot emergency shoulders
- 55 mph speed limit
- 45-foot clearance

Next Segment: New St. Johns River Bridge



- Advertisement: October 2021
- Award: August 2022
- Construction: Fall 2022 to 2029
- Total cost: \$393 million
- CEI Cost: \$43 million

Next Segment: New St. Johns River Bridge



- Length: 6.5 miles, including a 9,300-foot bridge
- Increased speed limit of 70 mph
- 65-foot clearance

Next Segment: New St. Johns River Bridge



- Two 12-foot travel lanes in each direction
- 12-foot outside shoulders
- 12-foot, 8.5-inch shared use path on the northbound side of the bridge to accommodate pedestrians and bicyclists

Next Segment: New St. Johns River Bridge



- Clay County BCC and FDOT have agreed to leave a portion of the existing Shands Bridge for recreational purposes
- FDOT is investing over \$1.1 million in parking, sidewalks, lighting and pedestrian improvements

Next Segment: New St. Johns River Bridge



- Similar plans for St. Johns County side of the existing Shands Bridge
- FDOT investments include barrier walls, parking, lighting, ADA accommodations and a shared use path to connect with the one on the bridge

Final Segment: Connection to I-95



Final Segment: Connection to I-95



- Advertisement: May 2022
- Award: April 2023
- Construction: Summer 2023 to 2030
- Total Cost: \$345 million
- Length: 7.5 miles
- Two-phase diamond interchange at CR 2209 and multi-lane major interchange at I-95



First Coast Expressway

www.firstcoastexpressway.com
Sara.Pleasants@dot.state.fl.us



Sustainable Growth in Clay County Florida

Jeremy D. Johnston, MBA, PE

Executive Director





Agenda

Mission Statement

Strategic Planning

Forecasting Growth

Integrated Water Resource Planning

Capital Improvement Program

Rate Study

Challenges and Opportunities



CCUA's Mission Statement

Our mission is to develop an environmentally and economically sustainable utility that is focused on protecting the public **health, safety, and general welfare** by providing clean and safe potable water, wastewater, and reclaimed water services through **conservation** of natural resources, **diversification** of the water supply portfolio, and **development of a highly trained professional staff** prepared for tomorrow's challenges.





Strategic Planning

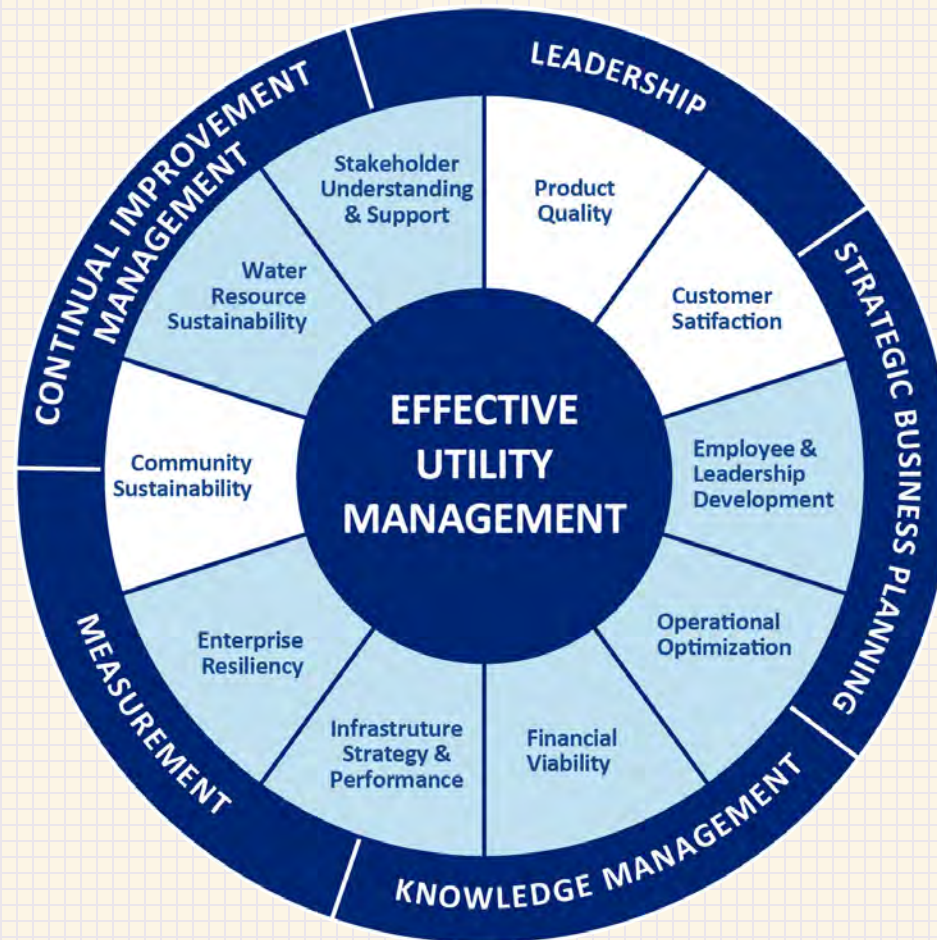
WHERE ARE WE GOING?



What is Strategic Planning?

Process of defining the following:

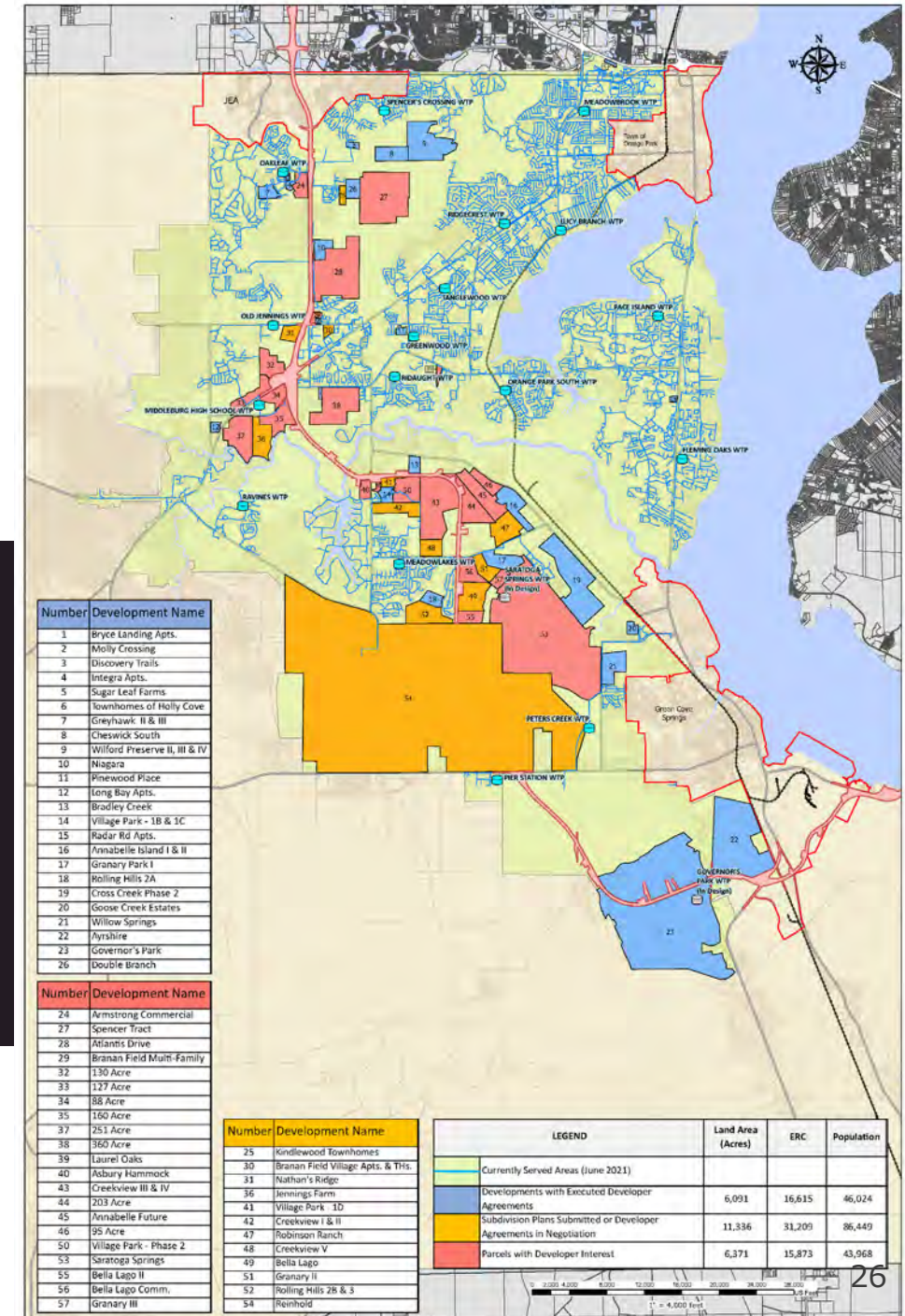
- **Organizational direction to achieve its vision and mission**
- **Supports decision making related to allocation of resources**
 - Customer Service
 - Financial
 - Human
 - Physical Infrastructure
 - Technology
 - Information Systems





Forecasting Growth

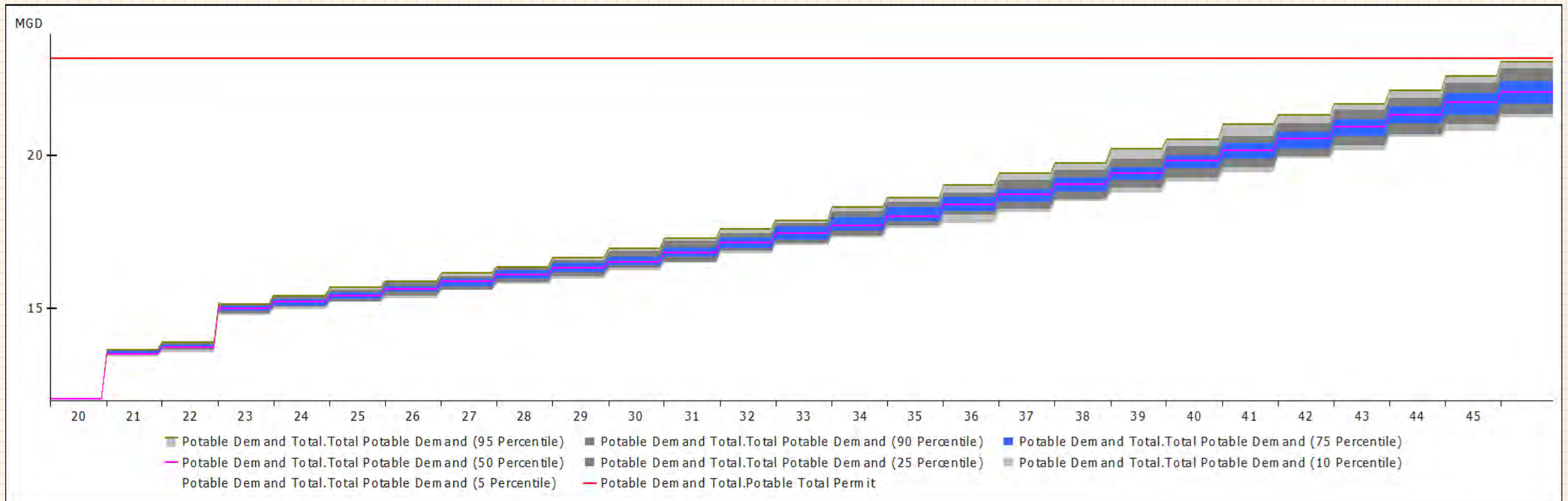
PEOPLE ARE MOVING TO
CLAY COUNTY





Forecast of Potable Water Demand

We remain highly confident in our 24 MGD forecast



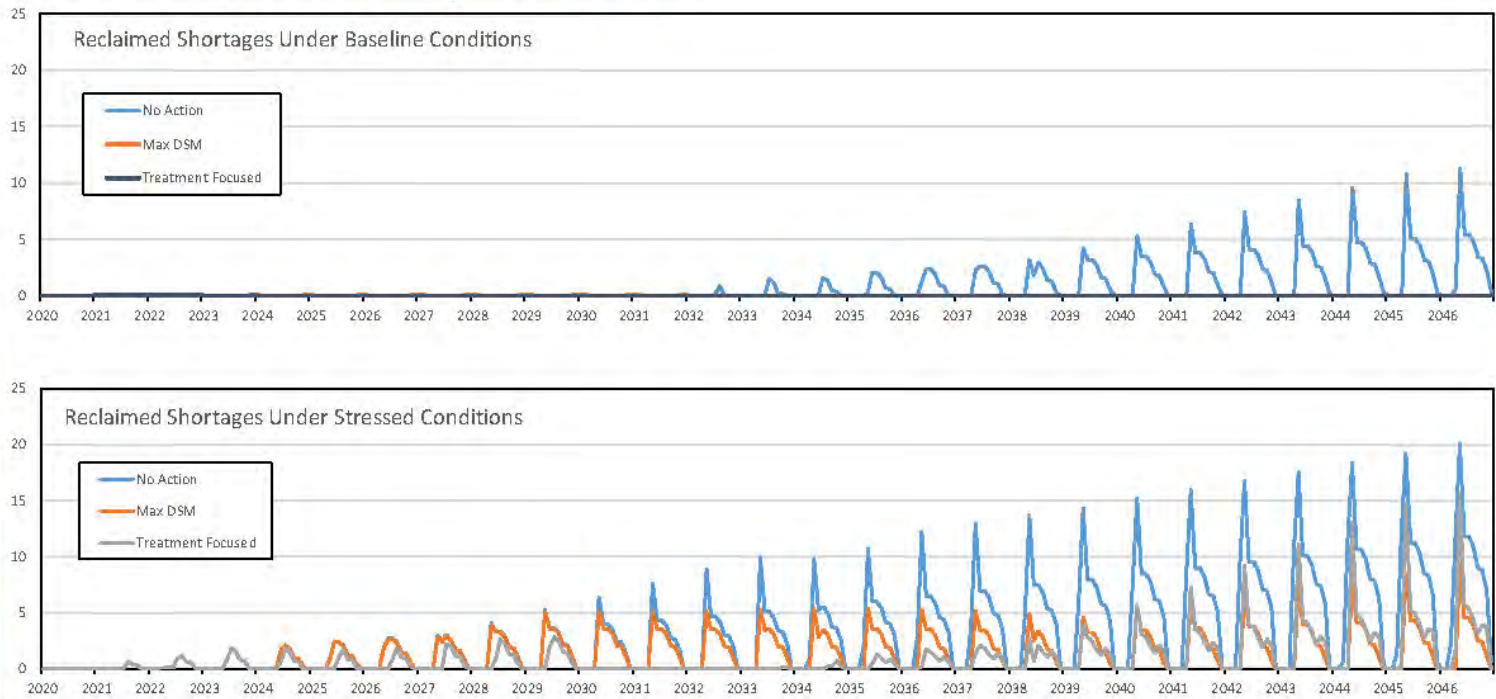
Data Source: CCUA IWRP Development with CDM Smith

Note: CCUA's IWRP efforts with CDM Smith are still on-going and being developed. The concepts discussed are not in final form.



Forecast of Reclaimed Water Demands

Shortage Comparison

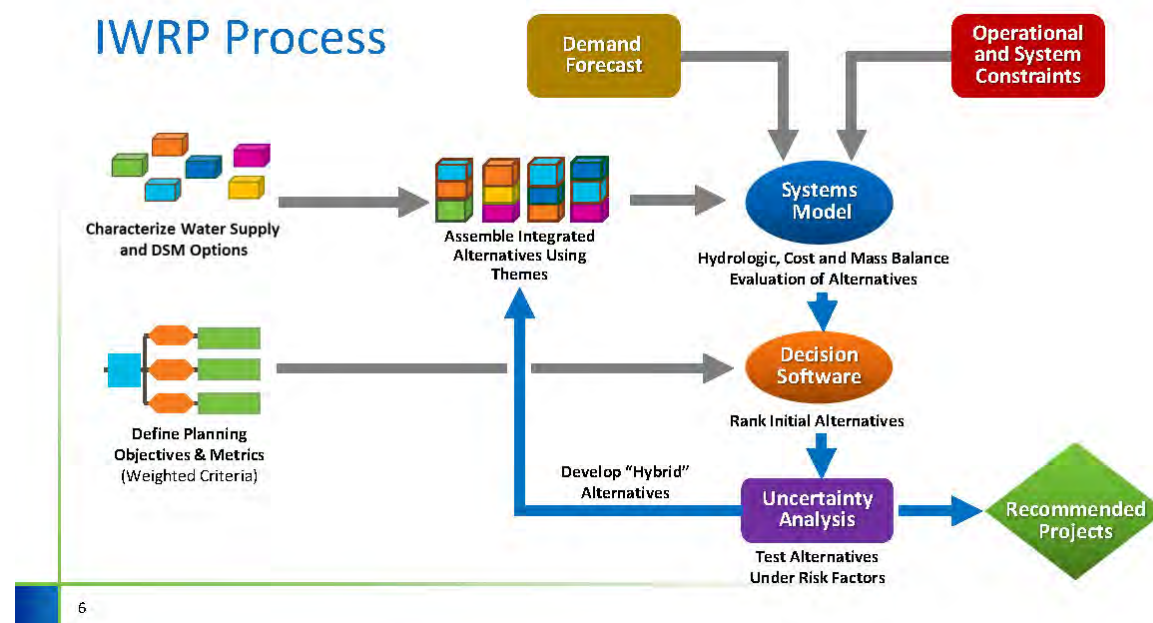


CCUA and the CDM Smith team currently forecast a reclaimed water deficit by 2032



Integrated Water Resource Planning

WHERE IS THE WATER GOING
TO COME FROM?

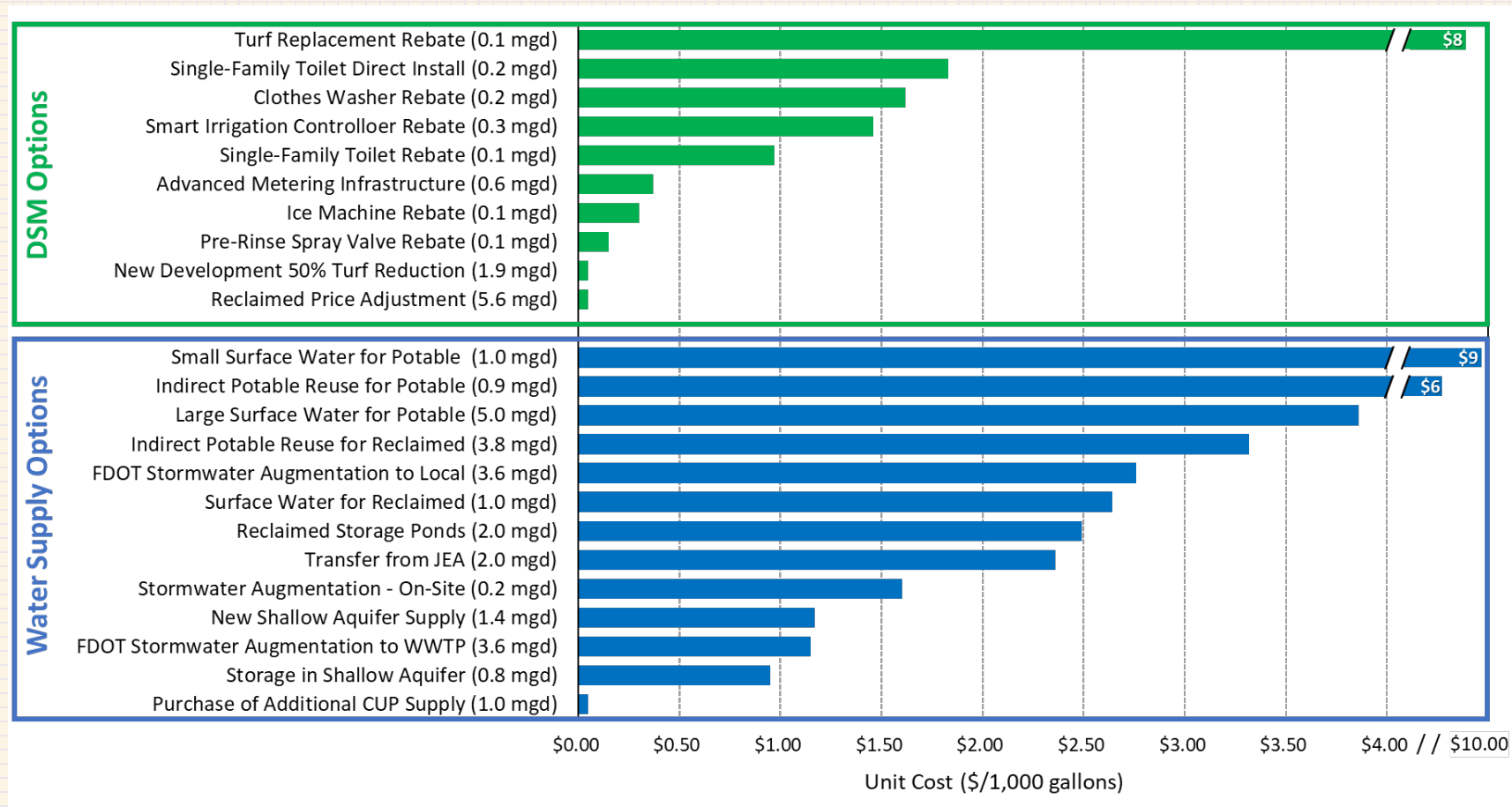


Data Source: CCUA IWRP Development with CDM Smith

Note: CCUA's IWRP efforts with CDM Smith are still on-going and being developed. The concepts discussed are not in final form.



Comparison of DSM and Water Supply Options



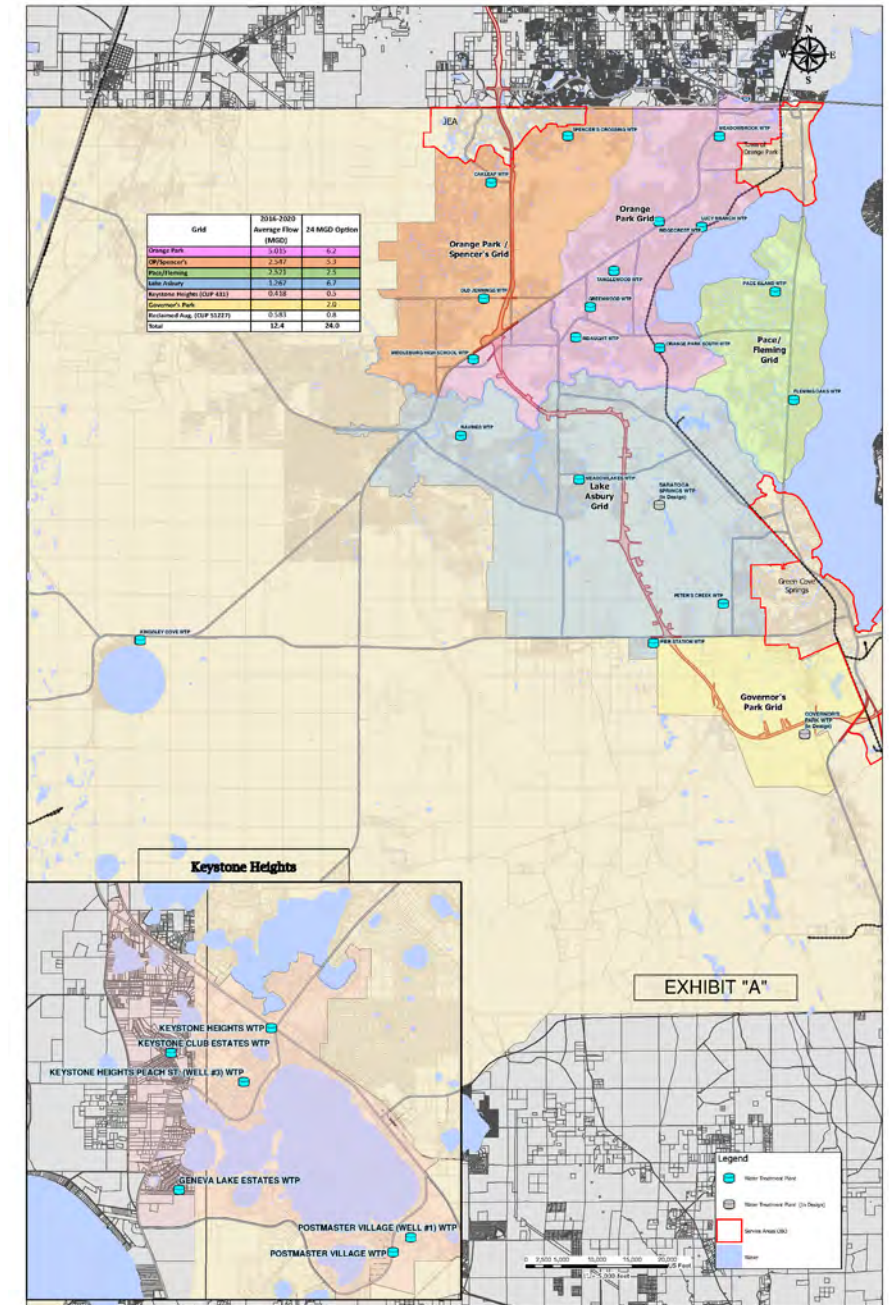
Data Source: CCUA IWRP Development with CDM Smith

Note: CCUA's IWRP efforts with CDM Smith are still on-going and being developed. The concepts discussed are not in final form.

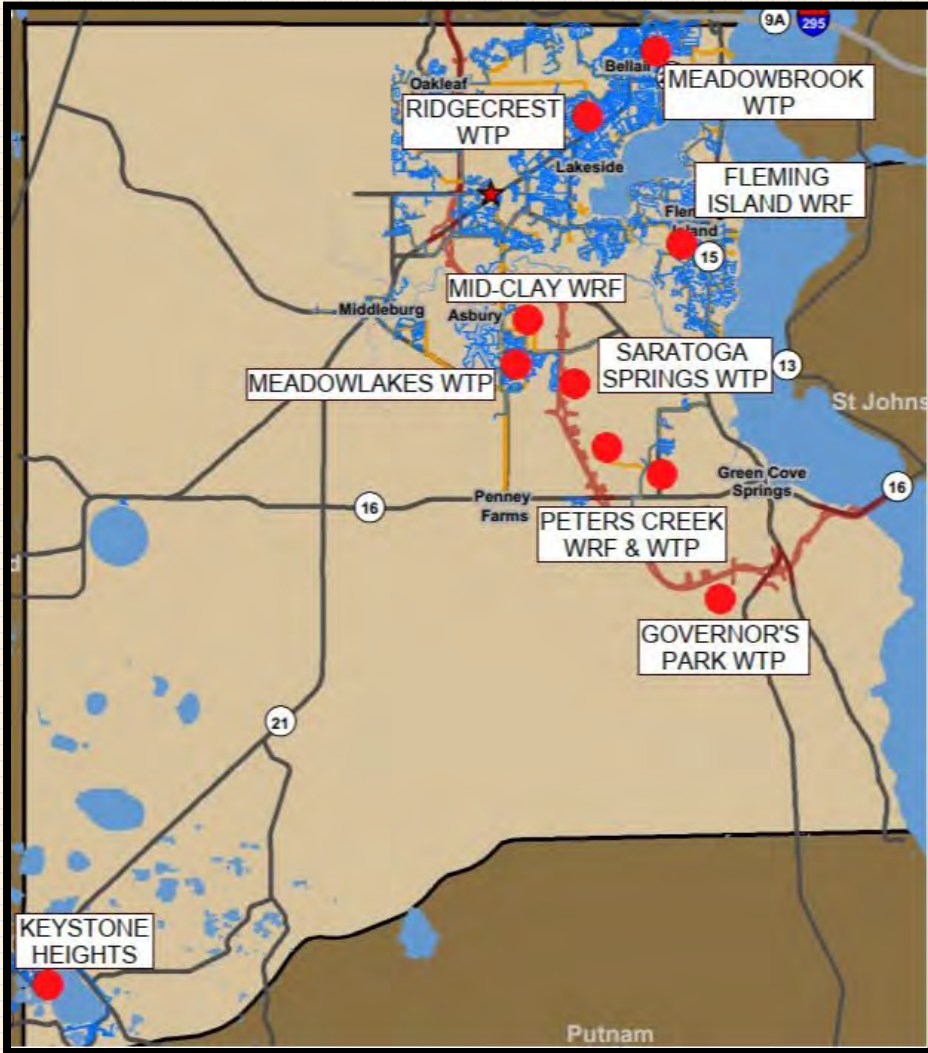


Capital Improvement Program

WOW! THAT STUFF IS EXPENSIVE!



Plant Expansions and Major Upgrades

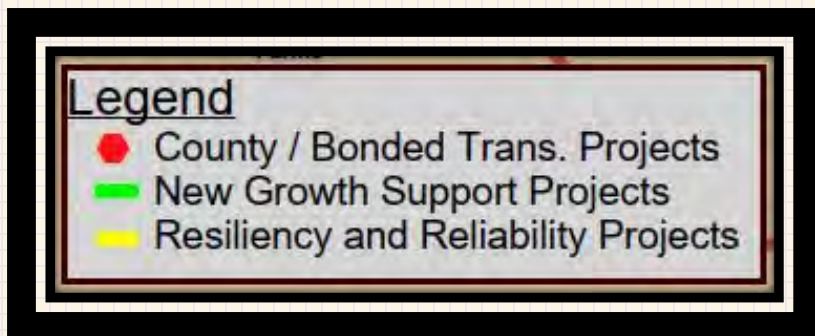


Plants (New, Expanded, Upgraded)		
Plant Name	Through FY 24	Through FY27
Peters Creek WRF	\$43.5 M	\$0.3 M
Peters Creek WTP	\$5 M	-
Saratoga Springs WTP & WRF	\$16.6 M	-
Governor's Park WTP	\$8.8 M	\$0.6 M
Mid Clay WWTP	\$7.2 M	-
Fleming Island BCR	\$7.2 M	-
Meadowbrook WTP	\$4.3 M	-
Meadow Lakes WTP	\$3.1 M	-
Ridgecrest WTP	\$2 M	-
Keystone Heights WTP	-	\$7.1 M
Total Major Costs Items	\$98 M	\$8 M

Data Source: CCUA's Proposed Capital Improvement Program Budget for Fiscal Year 2022/2023

Note: CCUA's Proposed Capital Improvement Program Budget is subject to change.

Major Pipelines to meet growth and address resiliency



CCUA Draft 5 Year Cost Breakdown						
Major Cost Items	FY23	FY24	FY25	FY26	FY27	Total
Major Pipelines (Growth, Coordination & Resiliency)	\$20.6 M	\$13.8 M	\$4.7 M	\$4.7 M	\$2.5 M	\$49 M



Data Source: CCUA's Proposed Capital Improvement Program Budget for Fiscal Year 2022/2023

Note: CCUA's Proposed Capital Improvement Program Budget is subject to change.

Capital Improvement Program Short-term Snapshot

CCUA Draft 5 Year Capital Improvement Plan		
CIP Budget Year	FY23	FY24
Proposed CIP Budget	\$115,687,147	\$72,438,531
Draft CCUA 5 Year Cost Breakdown		
Major Cost Items	FY23	FY24
* Lift Station R&R	\$5,167,500	\$2,862,000
* Plants (New, Expanded, Upgraded)	\$55,339,094	\$24,686,651
* Major Pipelines (Growth, Coordination & Resiliency)	\$20,570,000	\$13,846,000
* Plant Electrical Upgrades	\$831,176	\$3,748,125
* Alternative Water Supply	\$7,002,000	\$4,322,000
* Buildings	\$6,989,608	\$3,950,000
Total Major Cost Items	\$95,899,378	\$53,414,776
Percent of CIP	83%	74%
Remaining Budget Items	\$19,787,769	\$19,023,755
Contingency	\$11,568,715	\$7,243,853
Total CIP	\$127,255,862	\$79,682,384



Data Source: CCUA's Proposed Capital Improvement Program Budget for Fiscal Year 2022/2023

Note: CCUA's Proposed Capital Improvement Program Budget is a draft and subject to change.



Rate Study

HOW ARE WE GOING TO PAY FOR
EVERYTHING?

Policy Goals

Equity -

vertical and horizontal

Simplicity -

administratively and
for customers

Revenue stability



Policy Goals May Influence

Water conservation

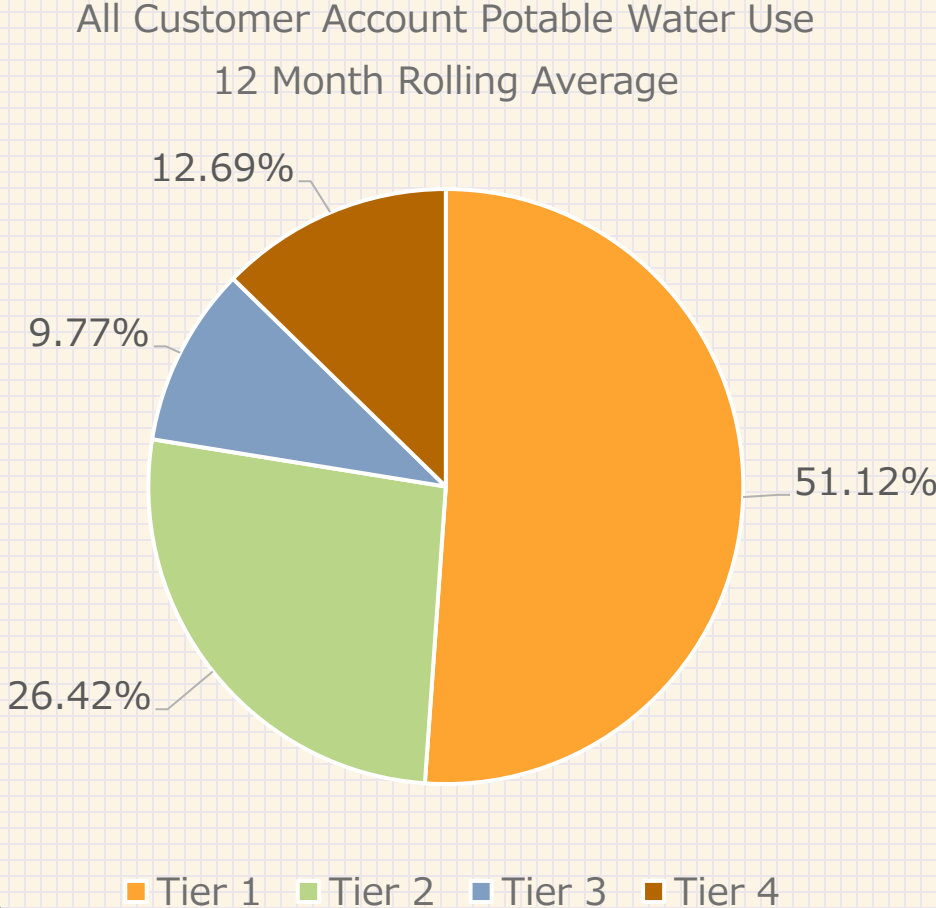
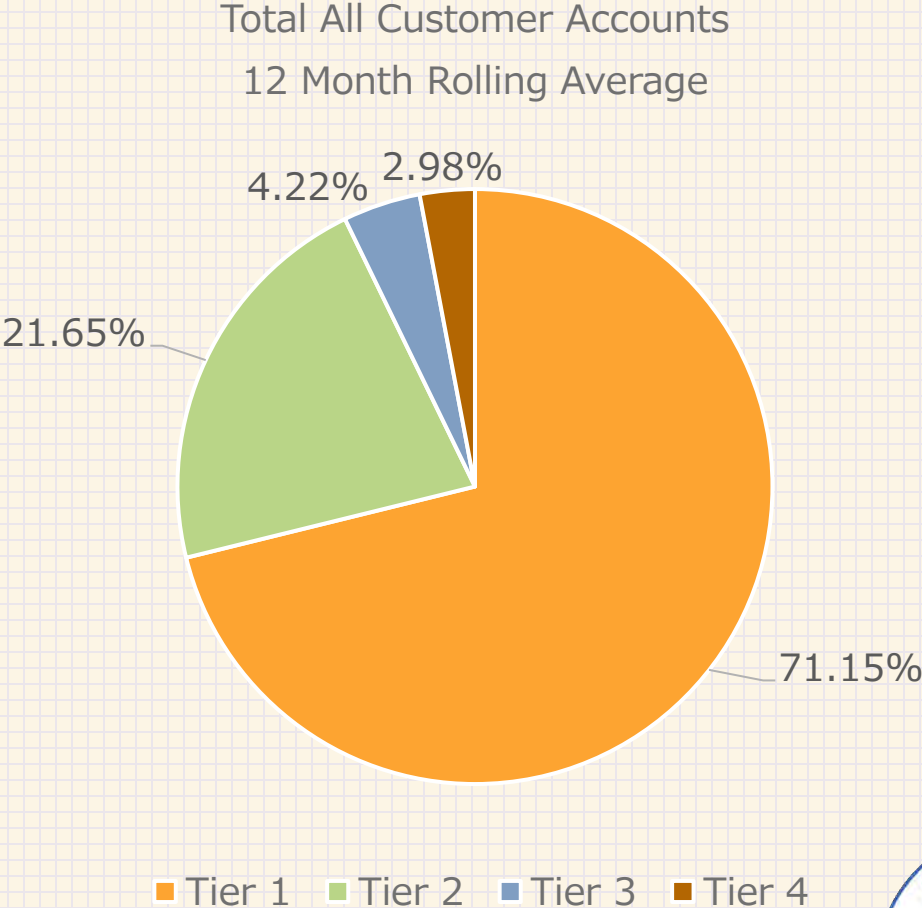
Different development classes

- Residential
- Commercial
- Commercial Irrigation

Relief tied to essential uses of water



CCUA's Total Water Use Make-up



Data Source: CCUA Demand Frequency by Tier Analysis



CCUA's Rates Remain Competitive

Clay County Utility Authority Illustrative Monthly Utility Bill Comparisons at Various Usage Levels -Residential Water and Sewer Customer Served by a 5/8 x 3/4 Meter-					
Utility	Average	Thousands of Gallons per Month			
		3	6	10	15
CCUA*	\$85.46	\$52.50	\$68.43	\$99.03	\$121.88
Green Cove Springs	\$94.73	\$46.91	\$74.60	\$107.52	\$149.87
Town of Orange Park	\$95.24	\$57.12	\$77.02	\$106.92	\$139.88
JEA	\$96.11	\$52.61	\$73.03	\$107.02	\$151.79
St. Johns County	\$104.16	\$55.91	\$82.64	\$120.60	\$157.50
GRU	\$103.19	\$46.64	\$76.64	\$118.55	\$170.93
ECUA	\$115.74	\$53.21	\$87.32	\$132.79	\$189.64
*Calculations include rates effective 10/01/2021					
Median	\$96.11	\$52.61	\$76.64	\$107.52	\$151.79
Mean	\$99.23	\$52.13	\$77.10	\$113.20	\$154.50

Challenges and Opportunities



Challenges and Opportunities

Regulatory

New regulations being developed

- ❑ Minimum Flows and Levels
- ❑ Potable Reclaimed Water
- ❑ Forever Chemicals

Scale and costs of these regulations are currently unknown



Workforce Development

Challenges

- ❑ People leaving the utility workforce faster than those entering
- ❑ Competition of state licensed operators

Opportunities

- ❑ Implemented grow and develop our own approach
 - High School Internship Program
 - Training and Incentive Program
 - Increased wages





Thank you

JEREMY D. JOHNSTON, MBA, PE



First Coast Expressway Impact on Schools Update

David S. Broskie, Superintendent



Presentation Objectives

- Introduction
- Enrollment and Student Data Trends
- Areas of Growth in Clay County
- Projected School Needs
- EdFIRST ½ Cent Sales Tax Update



Introduction - Superintendent Broskie

Educator for 32 years Clay County District Schools

- Lakeside Junior High- teacher and coach
- Clay High School- teacher and assistant principal
- Orange Park Junior High- principal
- Middleburg High School- principal
- Oakleaf High School- principal
- Assistant Superintendent- Human Resources
- Appointed Superintendent by Governor DeSantis in Feb. 2020
- Elected Superintendent by Clay County citizens Nov. 2020





TIED FOR
9TH STATE
RANKING



FLDOE NAMED
CLAY COUNTY AS A
**2021 ACADEMICALLY
HIGH PERFORMING
DISTRICT**

RANKED IN
**TOP
10**



BROKE GROUND ON SPRING PARK ELEMENTARY SCHOOL ON MAY 6, 2022.

**THE NEW SCHOOL WILL OPEN
TO STUDENTS IN GRADES K-6 IN AUGUST 2023.**



92.7%
GRADUATION RATE

THE CITIZENS OF CLAY COUNTY
**APPROVED A HALF-CENT SALES
TAX TO SUPPORT CAPITAL OUTLAY PROJECTS**
ON THE NOVEMBER 2020 GENERAL ELECTION BALLOT



CCDS STUDENTS EARNED
1,345 NATIONALLY
RECOGNIZED
INDUSTRY CERTIFICATIONS
LAST SCHOOL YEAR



**CONTINUE
TO ADD
SCHOOL
CHOICE
PROGRAMS:**

FROM MONTESSORI,
ARTS, ACCELERATED
LEARNING OPTIONS
SUCH AS
CAMBRIDGE AND
PRE AICE, TO THE
GARBER AUTOMALL
REPAIR PROGRAM AT
MIDDLEBURG
HIGH SCHOOL.



6TH
ELA
ACHIEVEMENT

10TH
MATH
ACHIEVEMENT

6TH
SCIENCE (TIED)

5TH
SOCIAL STUDIES
(TIED)

4TH
GRADUATION RATE
(TIED)



Current and Future Summary for CCDS

- Currently have 42 CCDS managed schools and two charter schools
 - One school currently under construction and one school in design phase
 - Projected to grow to 50 district-managed schools within the next 10 years
- Current District Membership enrollment is 42,449 (May 2022) students
 - Projected to enroll >10,500 more students within ten years
- >26,000 new homes are projected to be built within the next ten years
- CCDS new schools; over \$350 million to build new schools based on **projected** demand of new students

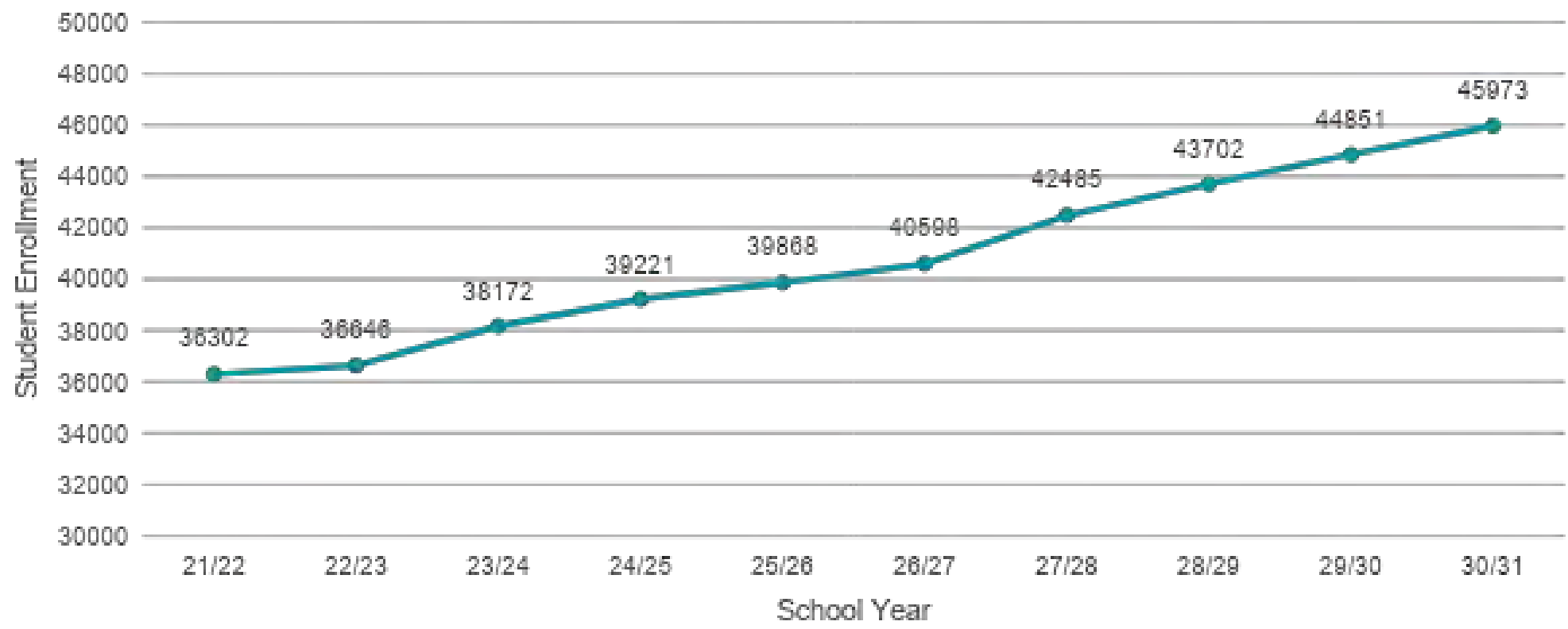


Projected County Growth- COFTE



26.6% Increase

10 Year Enrollment Projections (Traditional Students)





Overall Summary

Growth in Clay County District Schools



Overall Projected Growth Summary

Residential Area	Number of Homes
Lake Asbury	>7,600
Oakleaf/Middleburg	>3,400
Saratoga Springs DO	8,500
Governors Park	6,300
Total	>26,000

- First Coast Expressway completion: 2029
- 26,000 homes brings in approximately:
 - 5,462 Elementary Students
 - 1,669 Junior High Students
 - 3,423 High School Students

Total Projected Students: 10,554



COFTE Projected Long Range Needs- Ten Years



FL DOE COFTE Projections (Based only on historical data)

Grade Level	10 Year Student Increase	Projected Needed Schools
Elementary	2,149	2.49 (2-3 Schools)
Junior High	3,040	2.38 (2-3 Schools)
High School	3,981	2.29 (2 Schools)




Clay County
District Schools
Building a Better Future

School Need #1
Green Cove Springs (Spring Park Elementary)
Opening 2023



Spring Park Elementary

Clay County District Schools
broke ground on our 43rd
school on May 6, 2022.



SPRING PARK ELEMENTARY FACILITY INFORMATION

- 20.9 acre site
- 110,000 gross square feet
- 48 classrooms
- Capacity for 851 students
- Grades K-6
- Emergency shelter capable
- State-of-the-art technology and design
- Total construction cost: \$35,457,078 million
- Opening August of 2023

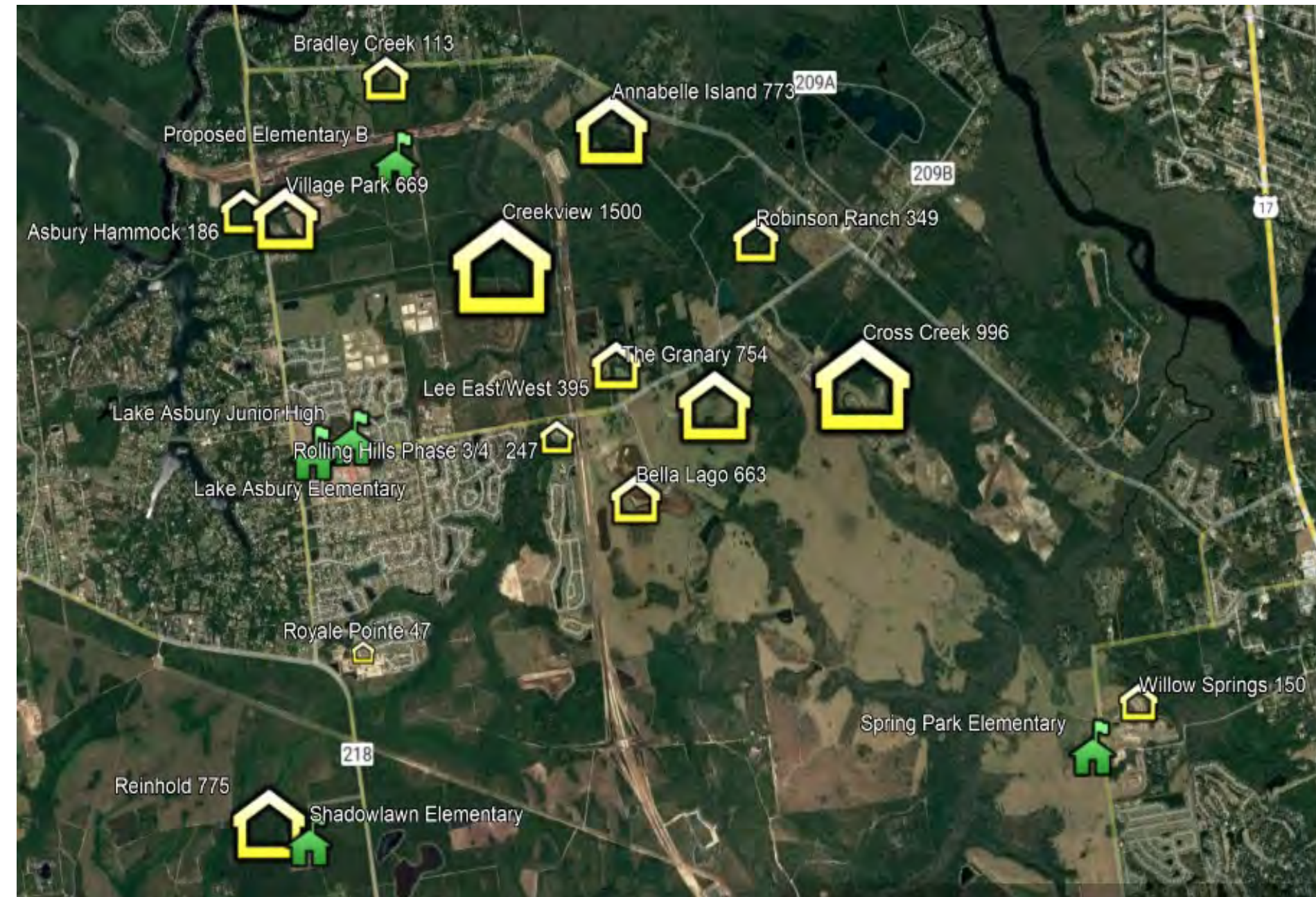
PROJECT ARCHITECT

Bhide & Hall Architects

PROJECT CONTRACTOR

Parrish McCall Construction, Inc.

Lake Asbury Growth



School (April 2022)	% capacity
Lake Asbury ES	92.9%
Shadowlawn ES	86.4%
Lake Asbury JH	80.9%
Clay High School	82.5%

Lake Asbury Growth

* Potential 7,617
homes

≈ 1,600 elementary
students



Lake Asbury Growth

*** Potential > 7,600 homes**

≈ 1,600 elementary students

≈ 500 junior high students

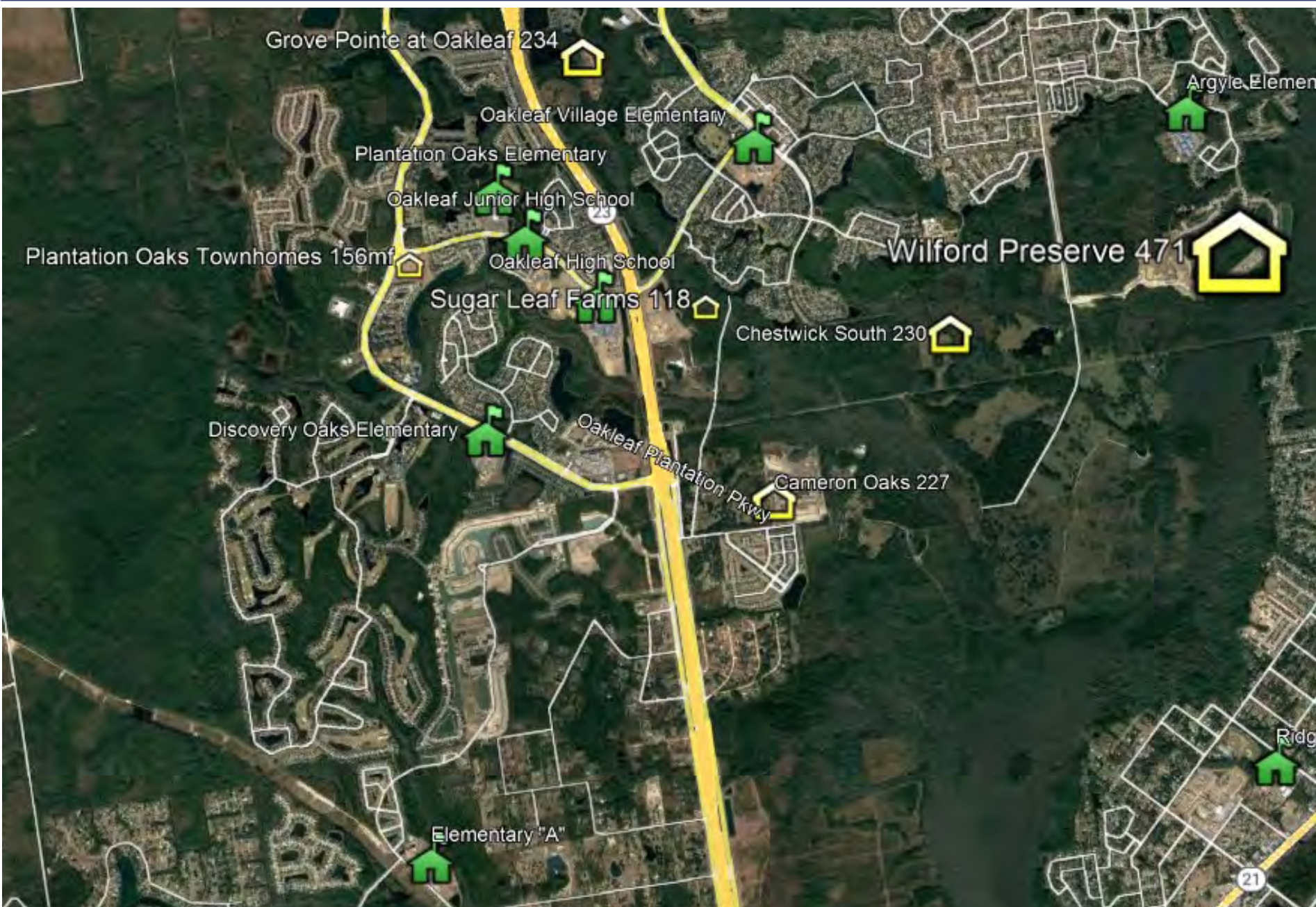
≈ 1,000 high school students

***Total Students ≈ 3,100**



Clay County
District Schools
Building a Better Future

Projected School Need #2
Oakleaf/ Tynes/ Middleburg Area (School A)
Opening 2024

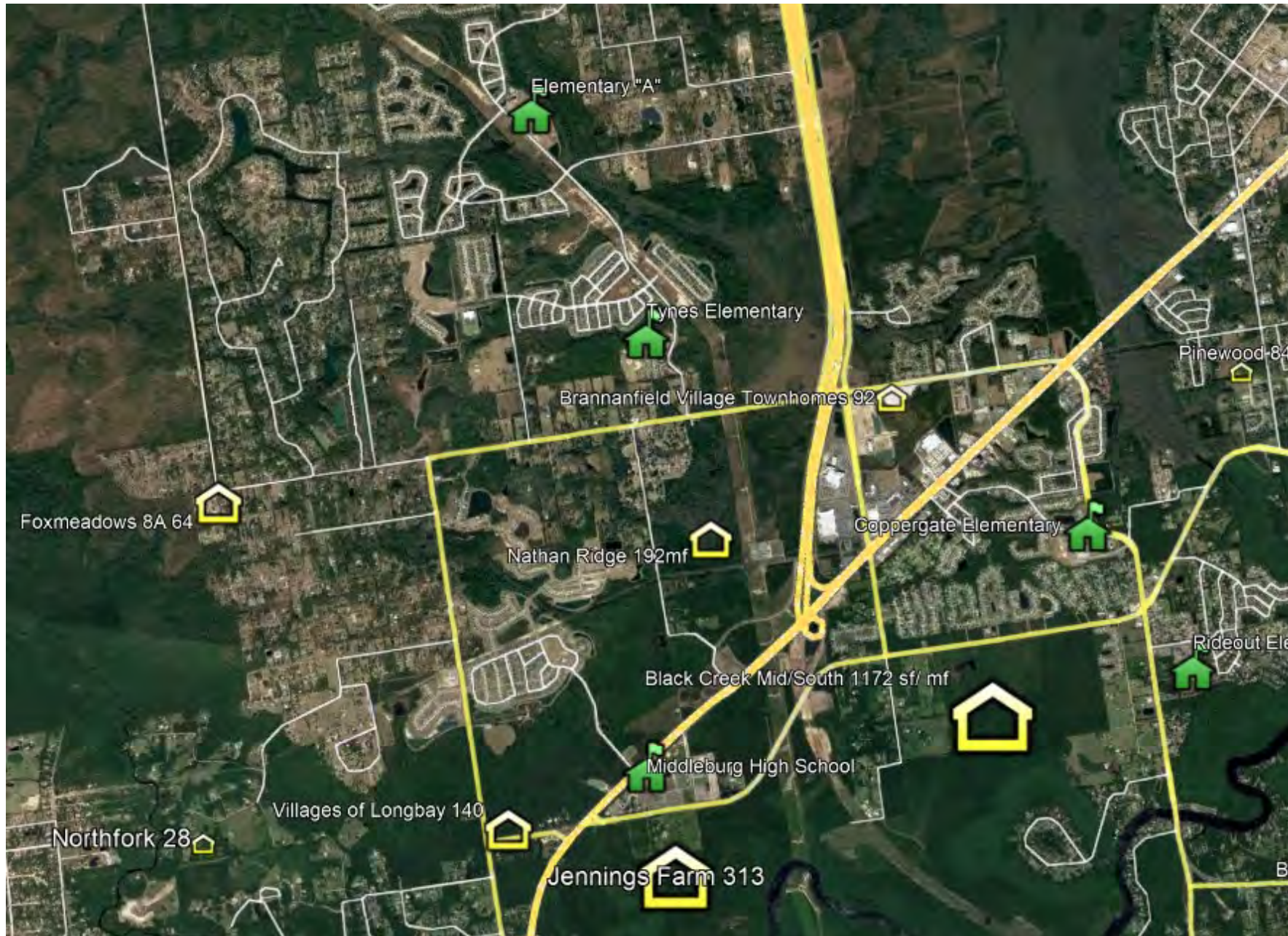


School (Apr 2022)	% capacity
Oakleaf HS	105.2%
Oakleaf JH	84.6%
Discovery Oaks ES	105.1%
Oakleaf Village ES	114.9% dining
Plantation Oaks ES	103.4%
Argyle ES	87%

Oakleaf Growth

* Potential > 1,500
homes

≈ 320 elementary
students



School (Apr 2022)	% capacity
Tyne ES	93.5%
Middleburg ES	86.9%
Middleburg HS	102.6% dining

Tynes/ Middleburg Growth

* Potential > 1,900 homes

≈ 405 elementary students



Oakleaf/ Tynes/ Middleburg Growth

*** Potential > 3,400 homes**

≈ 722 elementary students

≈ 219 junior high students

≈ 453 high school students

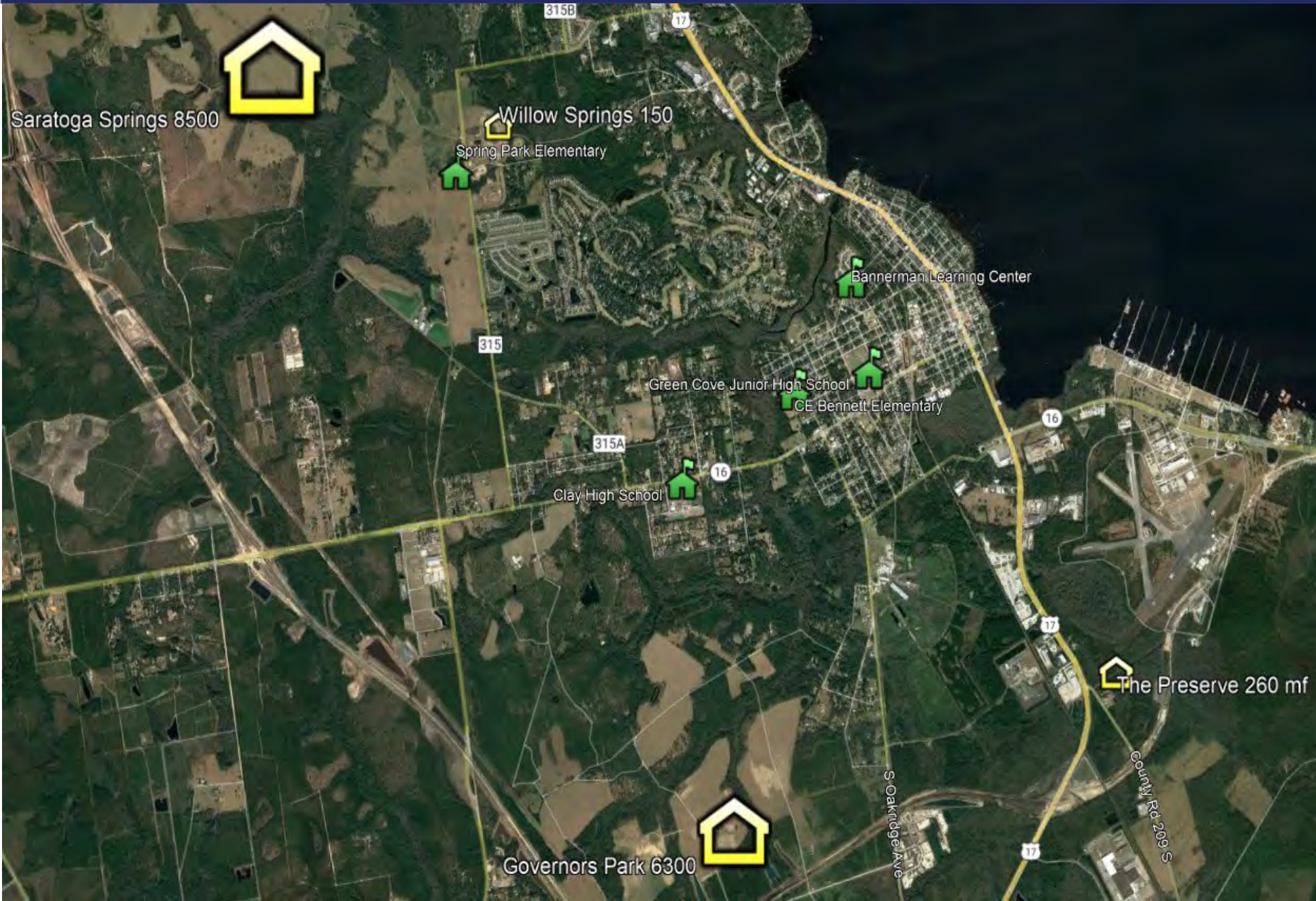
***Total Students ≈ 1,394**



Projected Future School Needs #3

For the Lake Asbury/GCS Area

Green Cove Springs Growth



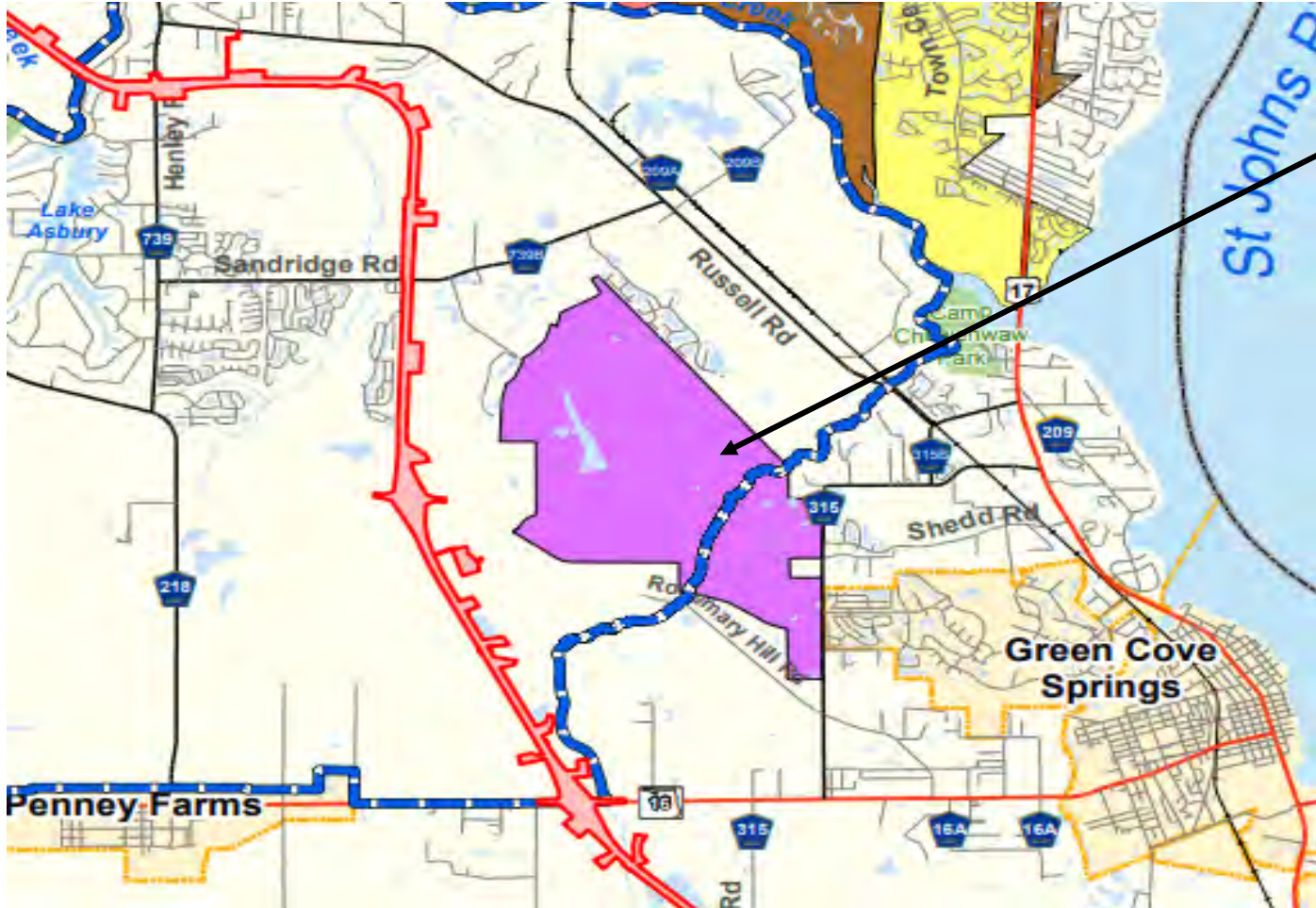
School (Apr 2022)	% capacity
Spring Park ES Reserved	98%
CE Bennett ES	73.3%
Green Cove JH	85.1%
Clay High School	82.5%

GCS Growth

* Potential 15,210 homes

≈ 3,200 elementary students

Saratoga Springs- GCS



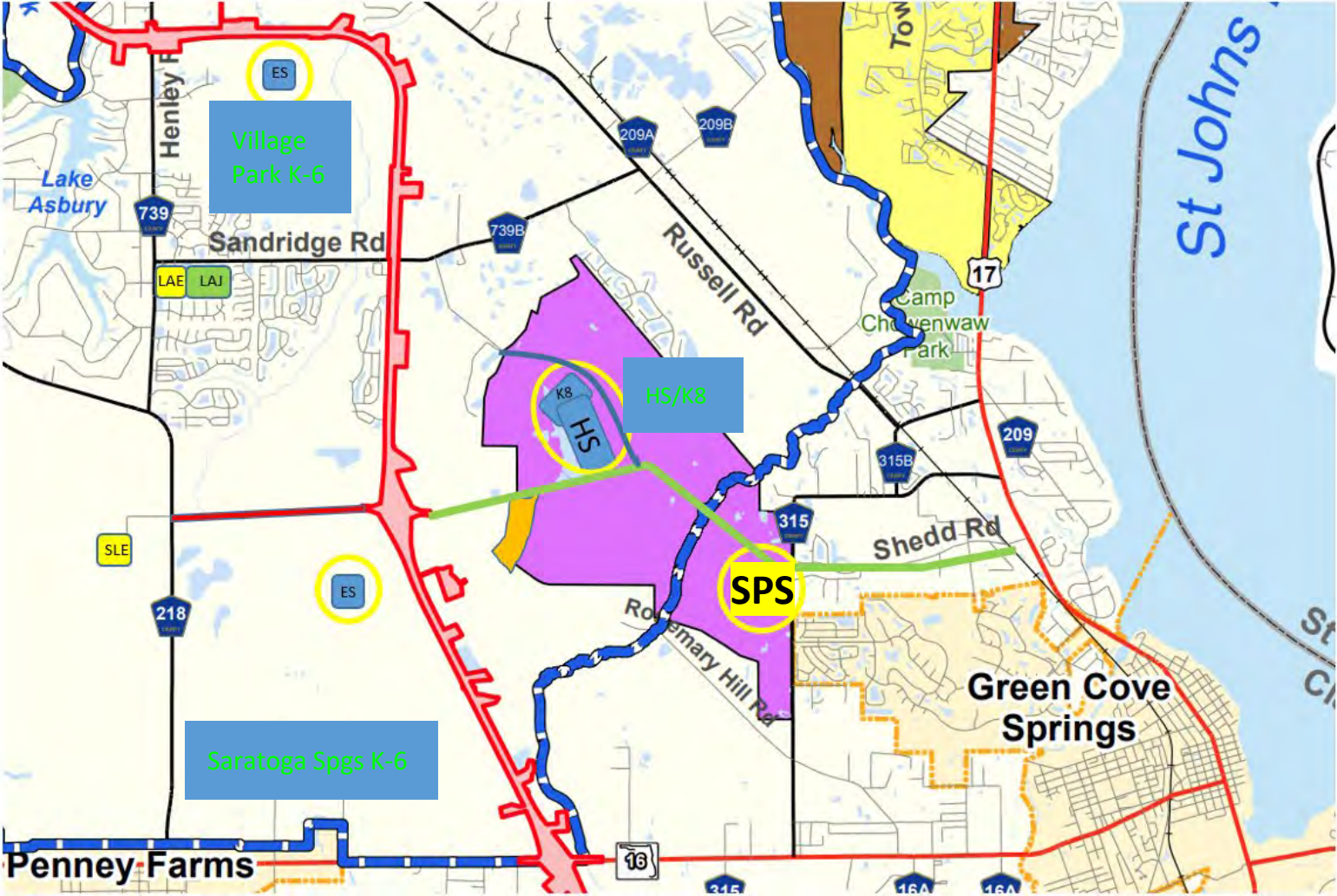
Saratoga Springs

≈ 8,500 Homes

Impact

- ≈ 1,800 elementary students
- ≈ 550 junior high students
- ≈ 1,130 high school students

Proposed Sites for Saratoga Springs Schools



School	# of Stud's	Projected Open
Village Park K-6	862	Aug 2025
Saratoga Spgs *K-8	1,275	Aug 2027
Saratoga Spgs *High School	1,739	Aug 2027
Saratoga Spgs K-6	862	Aug 2028

* co-located

**Subject to change based on actual growth

Governors Park-GCS



Governors Park

≈ 6,300 Homes

Impact

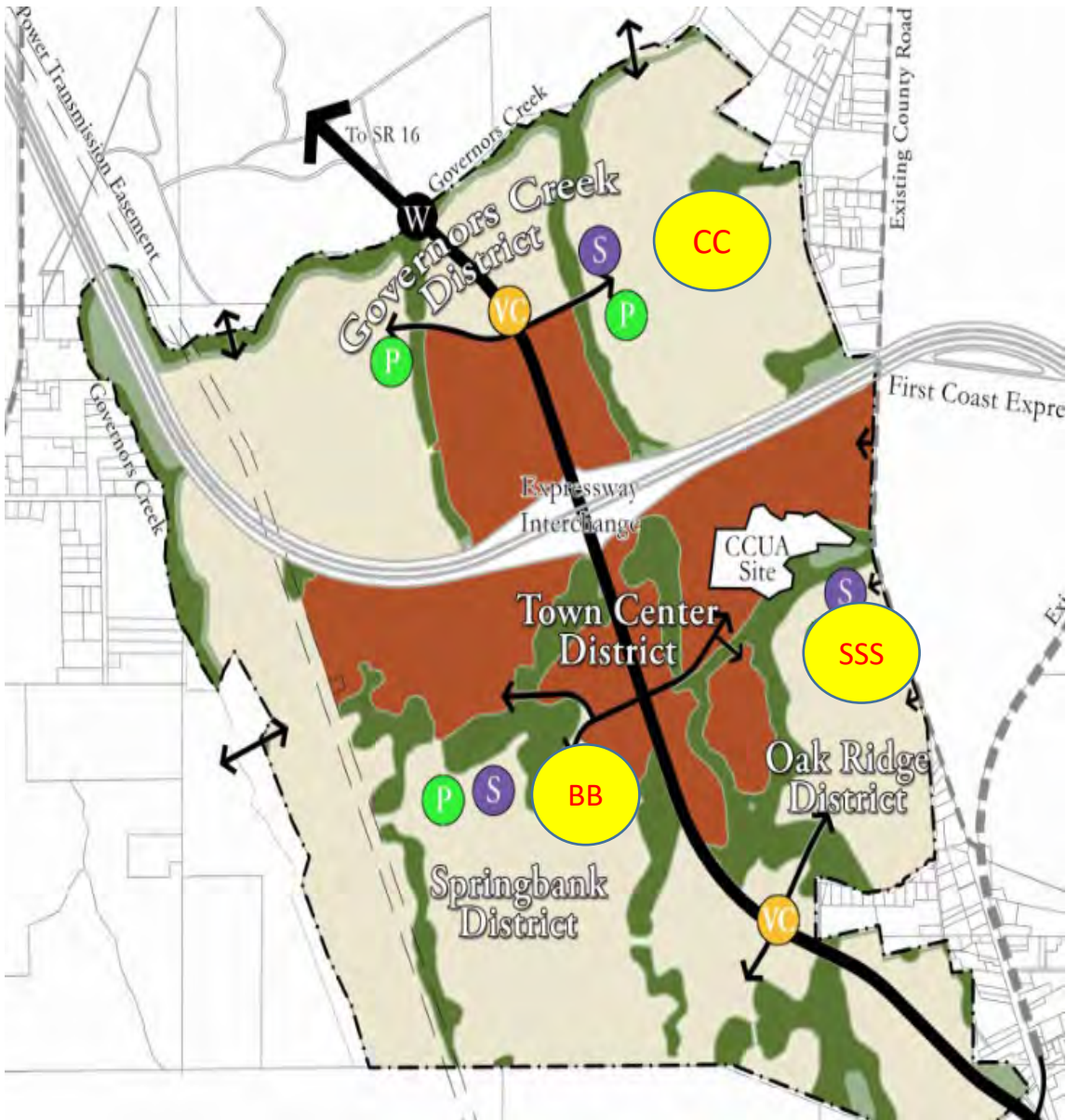
- ≈ 1,340 elementary students
- ≈ 400 junior high students
- ≈ 840 high school students

Proposed Sites for Governors Park Schools



Development to coincide with completion of New Shands bridge 2029

School	# of Students	Projected Year
Governors Park "BB" K-8	1,275	2030
Governors Park "CC" K-8	1,275	2032
Governors Park "SSS" High School	1,739	2032





School Name	Opening	School Capacity	Area Impacted	Grade Level	Projected Cost
Spring Park Elementary (CR 315)	2023	851	Lake Asbury (GCS)	K-6	\$35M
School "A" (Two Creeks)	2024	862	Two Creeks Oakleaf & Tynes	K-6	\$35M
School "B" (Lake Asbury)	2025	862	Creekview, Village Park, Lake Asbury	K-6	\$35M
K-8 and High School (Saratoga Springs)	2027	1275/1739	Saratoga Springs	K-8 and 9-12	\$75M/\$100M
Elementary School (GCS)	2028	862	Saratoga Springs	K-6	\$35M



EdFIRST

½ Cent Sales Tax Referendum Update



- EdFIRST - Educational Eacilities Infrastructure Restricted Sales Tax
- The resolution passed on the 2020 November General Election
- Citizens Advisory Committee has met quarterly since June 1, 2021
- Committee meets Quarterly

** Section 212.055 (6), Florida Statutes, authorizes schools boards, to levy a discretionary capital outlay sales surtax not to exceed one-half cent per dollar on all taxable transactions for the purpose of funding fixed capital outlay expenditures associated with the construction/improvement of existing school facilities...*



SALES TAX REFERENDUM EdFIRST Revenue - Calendar Year 2021

Fiscal Year	Period	Month Received	Date Proceeds Received	Sales Tax Collection Month/Year	REVENUE			TOTAL REVENUE
					Sales Tax Proceeds	Interest Earnings	AP	
2021		March	3/21/2021	January 2021	\$ 915,646.81			\$ 915,646.81
2021		April	4/21/2021	February 2021	\$ 874,415.28			\$ 1,790,062.09
2021		May	5/14/2021	March 2021 (Qtrly)	\$ 509,689.25			\$ 2,299,751.34
2021		May	5/27/2021	March 2021	\$ 1,110,642.09			\$ 3,410,393.43
2021		June	6/21/2021	April 2021	\$ 1,058,835.97			\$ 4,469,229.40
2021		July	7/21/2021	May 2021	\$ 980,881.29			\$ 5,450,110.69
2021		August	8/21/2021	June 2021 (Qtrly)	\$ 740,310.09			\$ 6,190,420.78
2021		August	8/21/2021	June 2021	\$ 1,050,011.51			\$ 7,240,432.29
2021		September	9/21/2021	July 2021	\$ 988,934.46			\$ 8,229,366.75
2021		October	9/21/2021	August 2021	\$ 932,828.83			\$ 9,162,195.58
2021		November	11/14/2021	September 2021 (Qtrly)	\$ 873,996.96			\$ 10,036,192.54
2021		November	11/21/2021	September 2021	\$ 975,056.26			\$ 11,011,248.80
2021		December	12/21/2021	October 2021	\$ 987,079.48			\$ 11,998,328.28
2022		January	1/22/2022	November 2021	\$ 994,907.38			\$ 12,993,235.66
2022		February	2/21/2022	December 2021 (Qtrly)	\$ 1,131,311.36			\$ 14,124,547.02
2022		February	2/27/2022	December 2021	\$ 1,212,338.54			\$ 15,336,885.56

TO DATE \$ 15,336,885.56

Projected \$ 13,500,000.00

Actual \$ 15,336,885.56

Charter Schools (4.0423%) \$ (619,962.92)

CCDS 1st YEAR TOTAL \$ 14,716,922.64

Projected \$13.5M
Actual \$15.3M



FUND	CNTR	PROJ	YEAR	FUNC	OBJ	SITE DESCRIPTION	PROJECT DESCRIPTION	BUDGET	ACTUAL	ENCUMBRANCES	BALANCE	NOTES
396	0021	3035	1	7400	681	Green Cove Junior High	Window/HVAC Repair Replacement (Buildings 1,2 &3)	\$ 100,000.00	\$ -	\$ 69,750.00	\$ 30,250.00	Windows - 20 Week leadtime - Windows EdFIRS1 Design Phase
396	0021	3061	1	7400	682	Green Cove Junior High	HVAC Repair Replacement (Media)	\$ 61,313.00	\$ 50,656.00	\$ 10,657.00	\$ -	COMPLETE - Final Payment Pend.
396	0071	3061	2	7400	682	Charles E. Bennett Elem	RTU Replacement (Cafetorium)	\$ 101,973.00	\$ -	\$ 101,973.00	\$ -	Ordered - Summer Install
396	0241	3002	2	7400	682	W. E. Cherry Elementary	Roof Replacement (Buildings 3 & 4)/Spalling Remediation	\$ 200,020.00	\$ 12,800.00	\$ -	\$ 187,220.00	Contract Award - May 5th - Summer Install
396	0241	3064	2	7400	682	W. E. Cherry Elementary	Spalling Remediation	\$ 6,400.00	\$ 640.00	\$ 5,760.00	\$ -	Bid Phase - combined with Roof Replacement
396	0252	3055	1	7400	682	Orange Park High	Ceiling and Lighting Replacement (Cafeteria)	\$ 143,412.00	\$ 143,412.00	\$ -	\$ -	COMPLETE
396	0252	3360	1	7400	672	Orange Park High	Asphalt Repair/Replacement (PE Basketball)	\$ 100,000.00	\$ -	\$ -	\$ 100,000.00	
396	0261	3061	2	7400	682	Doctors Inlet Elementary	HVAC Repair Replacement (Building 4)	\$ 95,685.25	\$ 86,116.73	\$ 9,568.52	\$ 0.00	COMPLETE - Final Payment Pend.
396	0271	3804	2	7400	672	Middleburg Elementary	Covered Play Area	\$ 120,589.00	\$ -	\$ 120,589.00	\$ -	Summer Install
396	0301	3061	2	7400	682	Keystone Heights Elementary	HVAC Repair/Replacement (B10 Wall Mount)	\$ 74,752.00	\$ -	\$ 74,752.00	\$ -	Ship 2/22 - March Install - In Progress
396	0301	3056	1&2	7400	630	Keystone Heights Elementary	New Cafeteria/Classrooms (Design)	\$ 10,946,206.69	\$ -	\$ 486,600.00	\$ 10,459,606.69	Architect - Phase I - 1/24 complete - Contractor f Construction \$48,000. Funds increased for Site Package GMP #1.
396	0311	3802	1	7400	682	Keystone Heights High	Restroom Renovations	\$ 45,000.00	\$ -	\$ -	\$ 45,000.00	Design Phase
396	0311	3061	1	7404	682	Keystone Heights High	HVAC Repair/Replacement	\$ 78,404.00	\$ -	\$ 78,404.00	\$ -	COMPLETE - Final Payment Pend.
396	0351	3061	1	7400	682	Lakeside Junior High	HVAC Repair/Replacement (Building 8)	\$ 56,520.37	\$ 28,260.19	\$ 28,260.18	\$ 0.00	Ordered - May Install - 80% Complete
396	0352	3061	2	7400	682	Lakeside Elementary	HVAC Repair/Replacement (Cafeteria)	\$ 154,434.50	\$ 138,991.05	\$ 15,443.45	\$ 0.00	COMPLETE - Final Payment Pend.
396	0352	3360	2	7400	672	Lakeside Elementary	Outdoor PE (sidewalk/asphalt)	\$ 97,052.38	\$ 97,052.38	\$ -	\$ -	COMPLETE
396	0361	3802	1	7400	681	Orange Park Junior High	CTE Kitchen Renovations	\$ 110,871.00	\$ -	\$ 110,871.00	\$ -	Project \$140,871.00 CTE funded \$30K - Summer Install
396	0361	3802	1	7400	681	Orange Park Junior High	Restroom Renovations	\$ 91,757.00	\$ -	\$ -	\$ 91,757.00	Design Phase
396	0371	3061	1	7404	682	Wilkinson Jr. High	HVAC Repair/Replacement	\$ 76,235.00	\$ 68,611.50	\$ 7,623.50	\$ -	COMPLETE - Final Payment Pend.
396	0381	3061	1&2	7400	682	Montclair Elementary	HVAC Repair/Replacement (Building 2 & 5)	\$ 271,782.58	\$ 244,604.32	\$ 27,178.26	\$ 0.00	COMPLETE - Final Payment Pend.
396	0391	3002	1	7400	681	Middleburg High	Roof Replacement (Building 1)	\$ 3,228,020.15	\$ 96,726.10	\$ 110,824.05	\$ 3,020,470.00	Contract Award Pending Board Approval May 5th
396	0391	3023	1	7400	682	Middleburg High	Repair/Renovate Boilers	\$ 119,655.00	\$ 70,000.00	\$ 49,655.00	\$ -	COMPLETE - Final Payment Pend.
396	0411	3061	2	7400	682	Clay Hill Elementary	HVAC Repair/Replacement (Building 6)	\$ 142,072.00	\$ -	\$ 142,072.00	\$ -	Ordered - Summer Install
396	0411	3804	2	7400	682	Clay Hill Elementary	Covered Play Area	\$ 119,190.00	\$ 119,190.00	\$ -	\$ -	COMPLETE
396	0431	3495	2	7400	630	Ridgeview High	New Portable Restroom	\$ 400,000.00	\$ 72,548.00	\$ 220,651.00	\$ 106,801.00	Ordered - Summer Install
396	0431	3495	2	7400	630	Ridgeview High	Restroom Renovations	\$ 435,100.00	\$ 36,120.00	\$ 15,480.00	\$ 383,500.00	Contract Award Pending Board Approval May 5th
396	0431	3061	1	7400	682	Ridgeview High	HVAC Repair/Replacement (Controls)	\$ 113,240.00	\$ 18,200.00	\$ 95,040.00	\$ -	COMPLETE - Final Payment Pend.
396	0431	3034	1	7400	682	Ridgeview High	ADA Access Controls	\$ 25,888.06	\$ 24,917.86	\$ 970.20	\$ 0.00	COMPLETE - Final Payment Pend.
396	0471	3061	2	7400	682	Paterson Elementary	HVAC Repair/Replacement (Buildings 3,4,5 & 6)	\$ 231,284.00	\$ -	\$ 231,284.00	\$ -	In Progress
396	0481	3817	1	7400	682	Lake Asbury Junior	Kitchen/Cafeteria Renovations (Freezer/Cooler)	\$ 156,637.00	\$ 45,252.93	\$ 111,384.07	\$ -	Summer '22 Install
396	0491	3061	2	7400	682	Wilkinson Elementary	HVAC Repair/Replacement (Buildings 3,5,7 & 18)	\$ 189,957.00	\$ 109,957.00	\$ 80,000.00	\$ -	Ordered - Summer Install
396	0511	3061	2	7400	682	McRae Elementary	HVAC Repair/Replacement (Buildings 1,2 & 3)	\$ 132,744.00	\$ -	\$ 132,744.00	\$ -	COMPLETE - Final Payment Pend.
396	0521	3817	2	7400	682	Fleming Island Elementary	Kitchen/Cafeteria Renovations (Freezer/Cooler)	\$ 117,750.12	\$ -	\$ 117,750.12	\$ -	Summer '22 Install
396	0551	3061	1	7400	682	Fleming Island High	HVAC Repair/Replacement	\$ 268,217.87	\$ -	\$ 268,217.87	\$ -	Ordered - May Install
396	0601	3804	2	7400	672	Coppergate Elementary	Covered Play Area	\$ 133,370.00	\$ 133,370.00	\$ -	\$ -	COMPLETE



Reality

- Middleburg High School - Roof Replacement \$3.2M
- Ridgeview High School - Restroom Renovations \$435K
- Patterson Elementary - HVAC Replacement \$231K
- Fleming Island High - Chiller Replacement \$300K
- W.E. Cherry Elementary - Roof Replacement \$200K
- Orange Park High - Cafe Ceiling/Lighting Repl. \$143K



Clay County
District Schools
www.claycountyschools.org

Thank You!